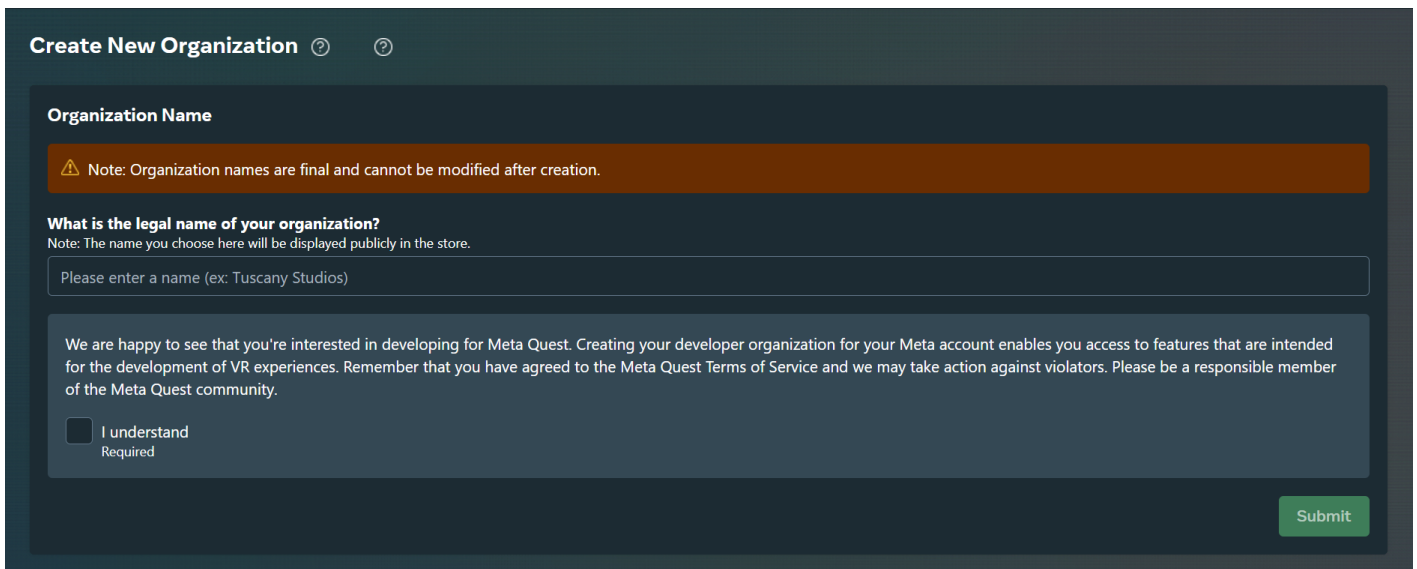


# Preparing a Meta VR Device For Usage With Next World Software

This article provides the steps to set up your Meta VR device before installing Next World's software on to the headset. Next World currently support Meta Quest 2, Meta Quest 3 and Meta Quest 3S.

In the current state of Next World supporting Meta headsets, you must enable developer mode for the Meta device from within the Meta Horizon mobile app on your mobile phone. Before you can put your device in developer mode, you must belong to (or have created) a developer organization on the [Meta Quest Developer Dashboard](#).

To create a new organization, go to the [Create New Organization](#) page of the Meta Quest Developer Dashboard and fill in the appropriate information.



The screenshot shows the 'Create New Organization' page. At the top, the title 'Create New Organization' is followed by two question mark icons. Below this, the section 'Organization Name' is highlighted. A brown warning bar states: 'Note: Organization names are final and cannot be modified after creation.' Underneath, the question 'What is the legal name of your organization?' is asked, with a note: 'Note: The name you choose here will be displayed publicly in the store.' A text input field contains the placeholder 'Please enter a name (ex: Tuscany Studios)'. Below the input field, a paragraph of text reads: 'We are happy to see that you're interested in developing for Meta Quest. Creating your developer organization for your Meta account enables you access to features that are intended for the development of VR experiences. Remember that you have agreed to the Meta Quest Terms of Service and we may take action against violators. Please be a responsible member of the Meta Quest community.' At the bottom left of this section is a checkbox labeled 'I understand' with 'Required' written below it. A green 'Submit' button is located at the bottom right of the form.

Next, go to the [verification tab](#) of the Meta Quest Developer Dashboard. If prompted, login with your Meta Developer account.

## Verify Your Meta Quest Developer Account

To be a Meta Quest developer, you need to provide a credit card OR set up text message two-factor authentication to help us establish your identity. If you remove this information, your account will no longer be verified. [Learn More](#)

✓ You have successfully verified your Meta Quest developer account

[Back to Home](#)



### Add Credit Card

This will be saved in your Meta account under Payment Methods. You can also use it for Meta Quest Store purchases.  
[Edit payment information](#)

✓ Completed



### Set Up Text Message Two-Factor Authentication

Start by clicking Set Up which will take you to the Meta Accounts Center. Select Two-factor authentication and select your Meta account, and then choose the Text message method (Note: Do not choose the Authenticator app method). Finish configuring text message two-factor authentication.

[Set Up](#)

Verify your account with one of the two following options:

- Confirm your mobile number to set up SMS two-factor verification

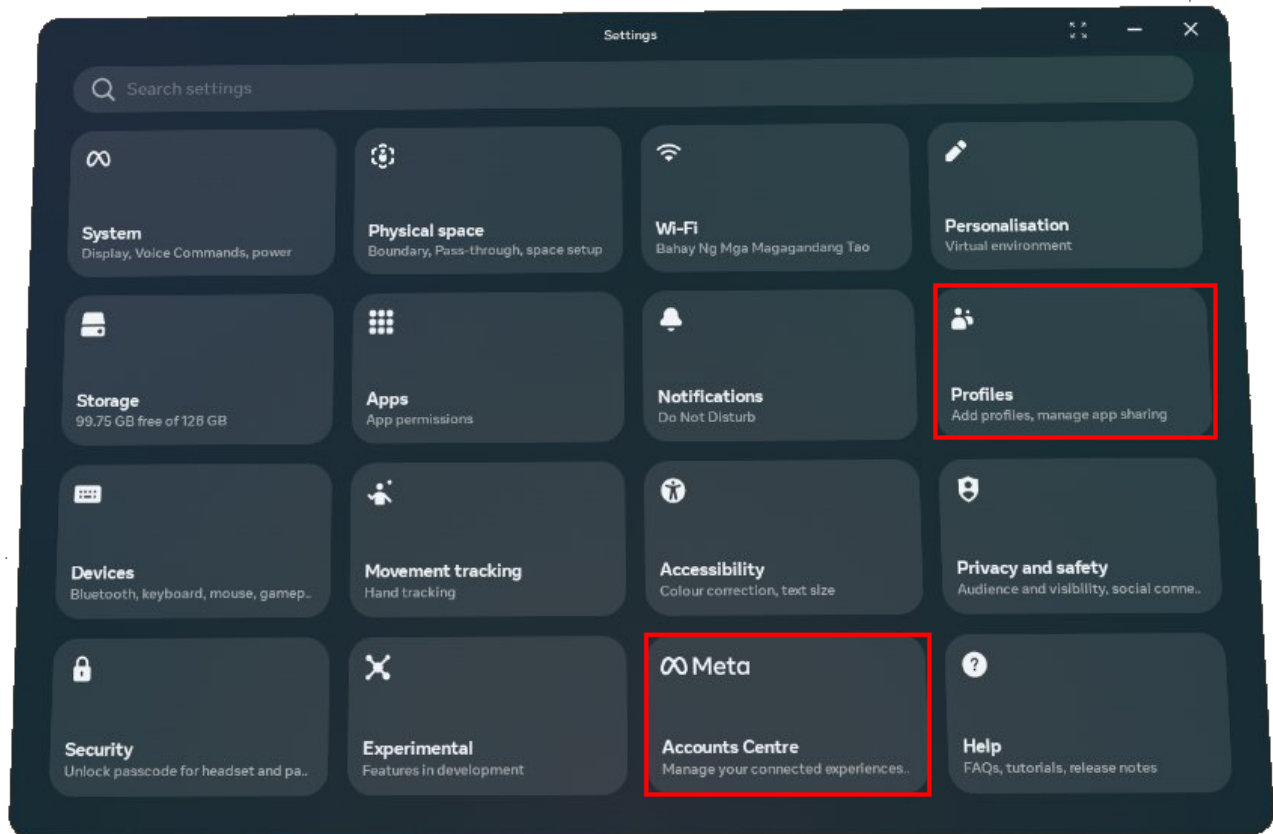
OR

- Add a payment method to your account (no payment will be made, this is purely for verification purposes).

## Enable Developer Mode

Once you have set up the Meta developer organization, follow these steps to put your device in developer mode:

1. You will need to be logged into your Meta account on your headset, put on your Meta headset and go to **Settings** then depending on the headset either **Profiles** or **Accounts Center** and log in.



2. Take off your headset and then download the Meta Horizon mobile app from your mobile device's app store, it is available for both Android and iOS.
3. Open the Meta Horizon mobile app and add a new device, following the instructions and select your Meta device type. You will reach the step asking you to enter your device's pairing code.

## Pair a new headset



Meta Quest 3S



Meta Quest 3



Meta Quest 2

Not now



## Choose how to connect your headset to Wi-Fi



### Enter Wi-Fi details on your headset

Type your password using your controllers.



### Use a QR code from this app

Enter your Wi-Fi details in this app to get a QR code.



### Headset already connected

Continue setup if you've already entered Wi-Fi details on your headset.



## Pairing



Looking for headset...



## Pair app to headset



Pairing lets you discover apps, find friends,  
and cast and share from your phone.

Look in your headset for a 5-digit code and enter it  
here.

Having trouble? [Learn more](#)

1

2

3

ABC

DEF

4

5

6

GHI

JKL

MNO

7

8

9

PQRS

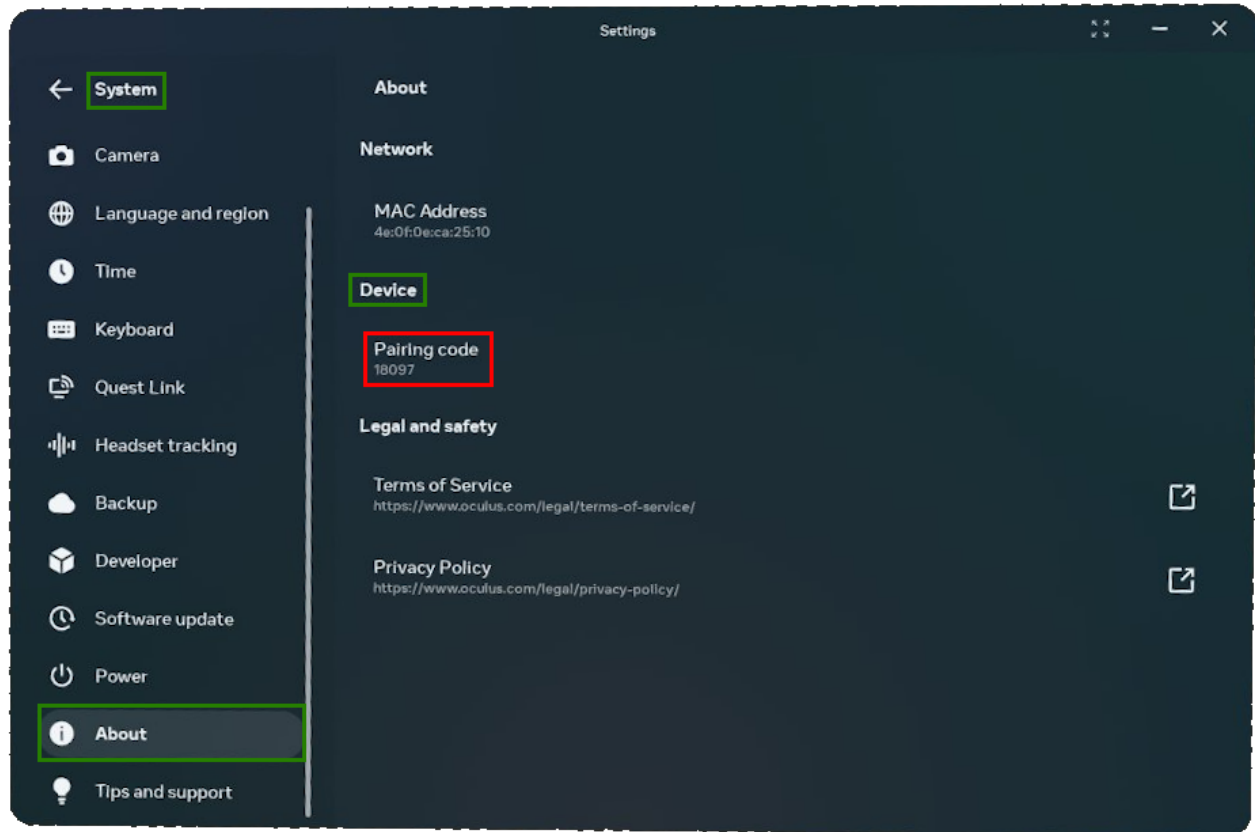
TUV

WXYZ

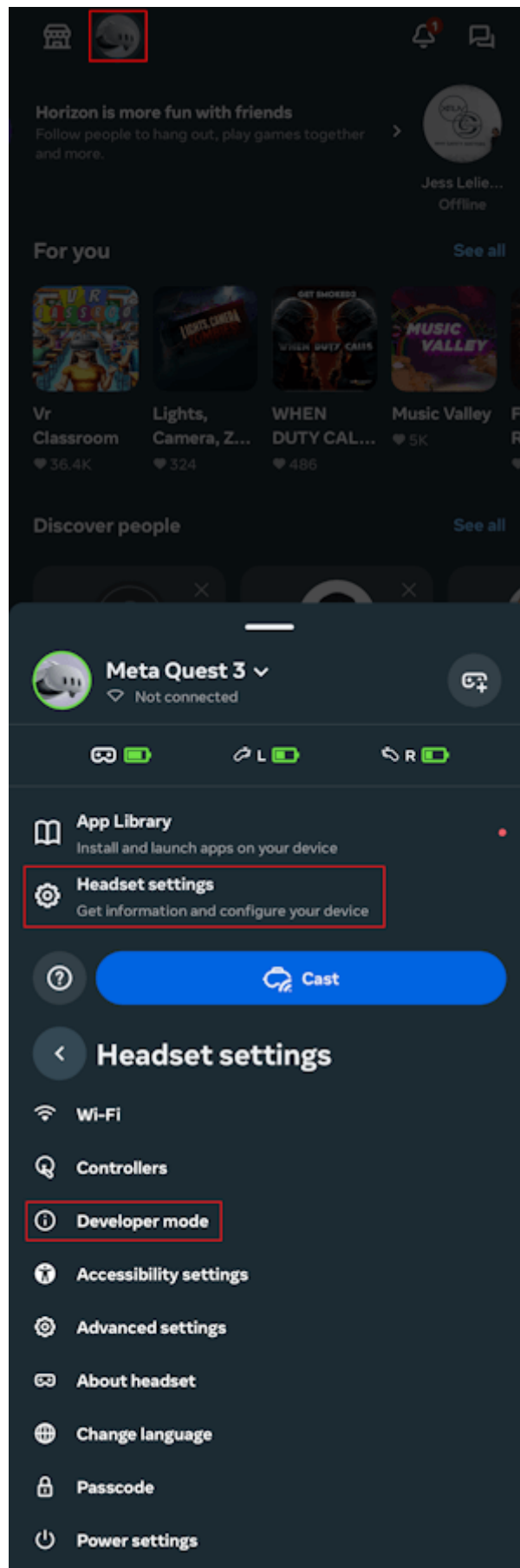
0

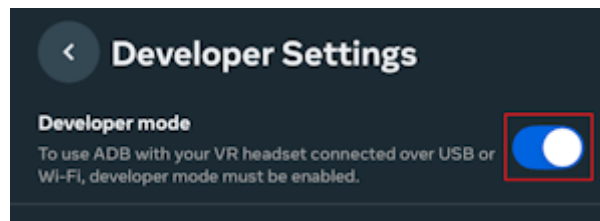


4. To view your Meta device's pairing code, put on your headset and go to **Settings** > **System** > **About** and under the **Device** section you will see your 5-digit Pairing code. Enter this code into the mobile app and continue with the setup.

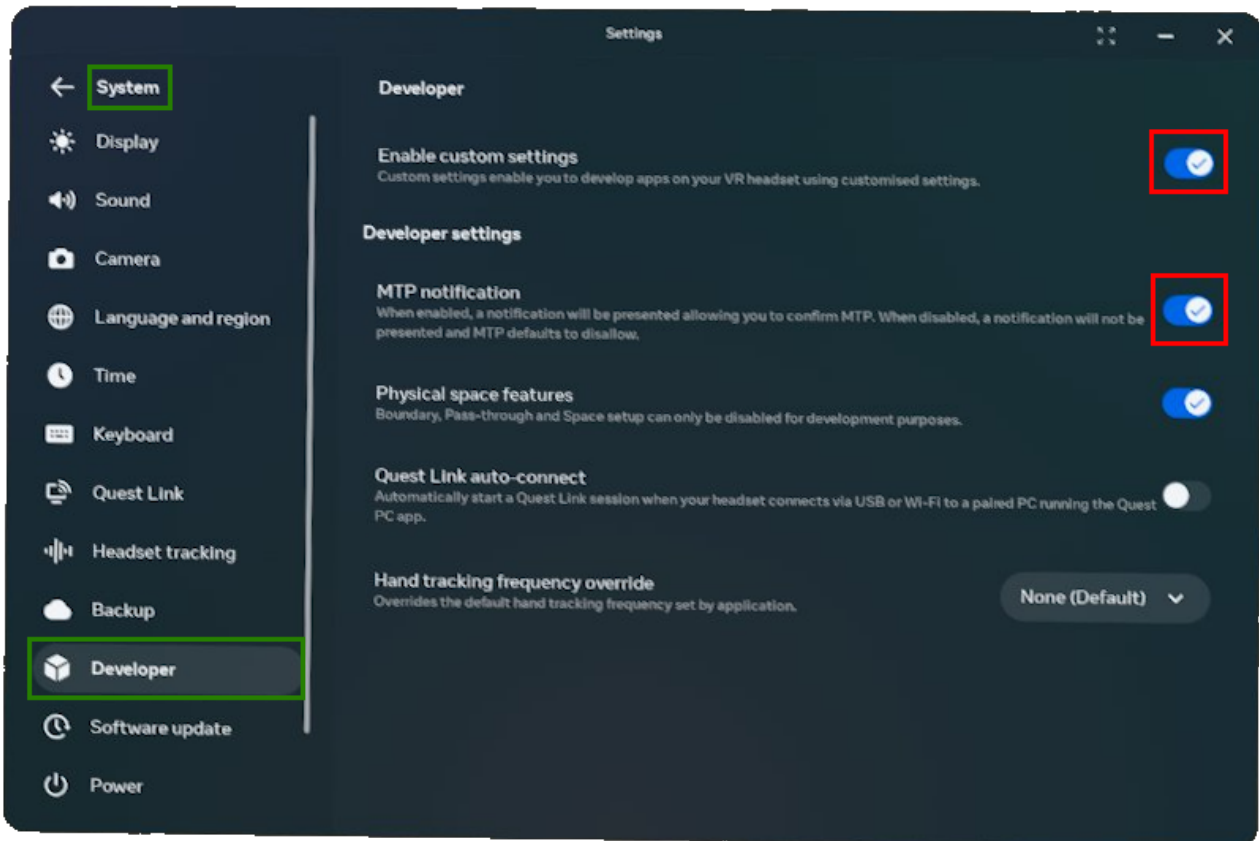


5. Once your device has been successfully set up and added to the app, select the headset in the app, then select **Headset Settings** > **Developer Mode** and switch on **Developer Mode**

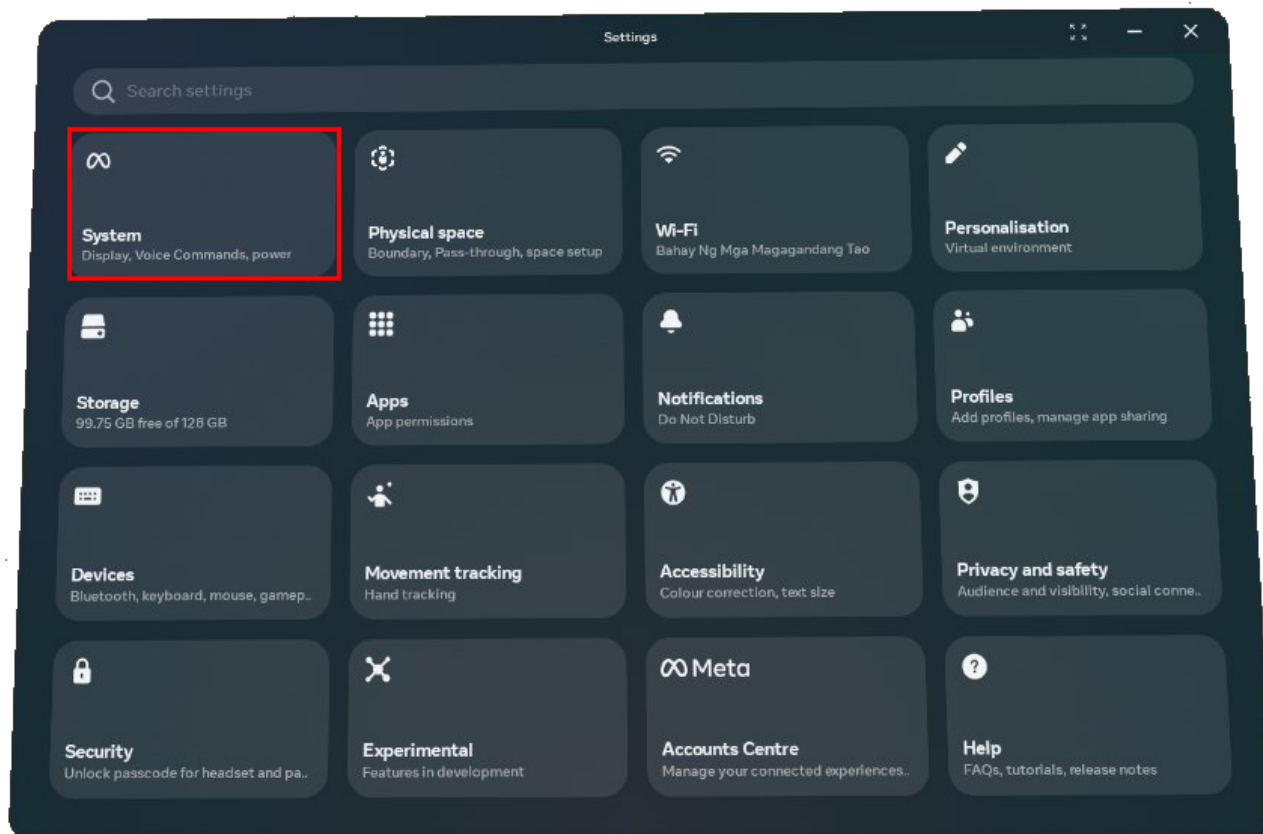




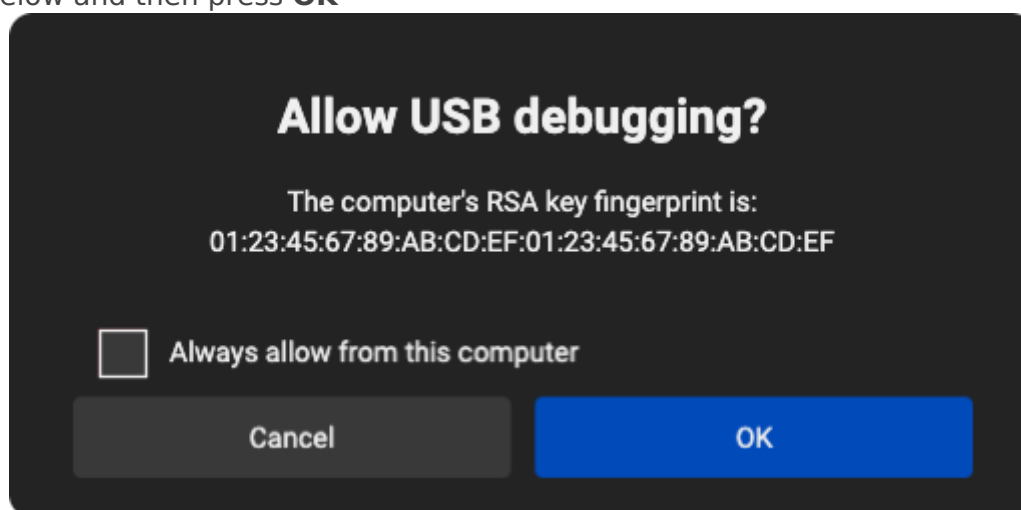
6. Connect the headset to the computer using a USB-C cable and put on the headset. In the headset, go to **Settings** > **System** > **Developer**, and turn on **Enable custom settings** and **MTP Notification**.







7. When prompted to allow USB debugging, select **Always allow from this computer** as shown below and then press **OK**



Once all the above steps are completed, your device is now set up and is ready to install the Next World software onto the headset. Please follow the instructions from the below link to continue with the installation of Next World's software onto your Meta headset: [How to Install Next World Software on to a New Headset](#)

Revision #23

Created 4 November 2024 04:25:55 by NWXR Admin

Updated 15 November 2024 01:40:56 by NWXR Admin